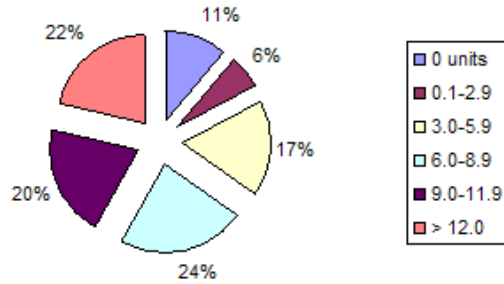


City College Disability Support Programs and Services Student Academic Demographics

**Units Attempted-City College DSPS Students**

0 units	105
0.1-2.9	58
3.0-5.9	161
6.0-8.9	217
9.0-11.9	189
> 12.0	200

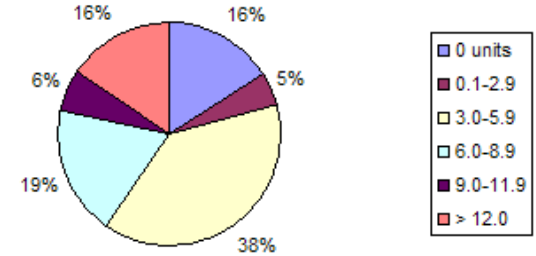
**Units Attempted-DSPS City College Students**



**Units Attempted-City College Students**

0 units	4876
0.1-2.9	1427
3.0-5.9	11648
6.0-8.9	5745
9.0-11.9	1850
> 12.0	4699

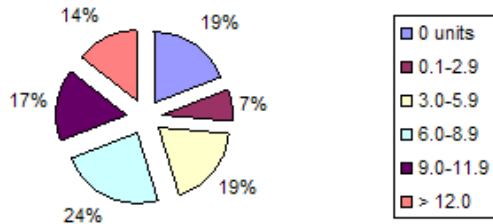
**Units Attempted-City College Students**



**Units Completed-City College DSPS Students**

0 units	181
0.1-2.9	66
3.0-5.9	174
6.0-8.9	219
9.0-11.9	156
> 12.0	134

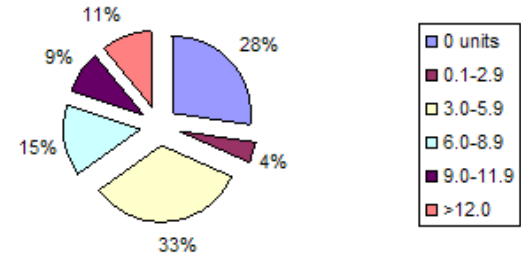
**Units Completed-DSPS City College Students 2006-2007**



**Units Completed-City College Students**

0 units	8767
0.1-2.9	1346
3.0-5.9	10441
6.0-8.9	4841
9.0-11.9	2917
>12.0	3433

**Units Completed-City College Students 2006-2007**

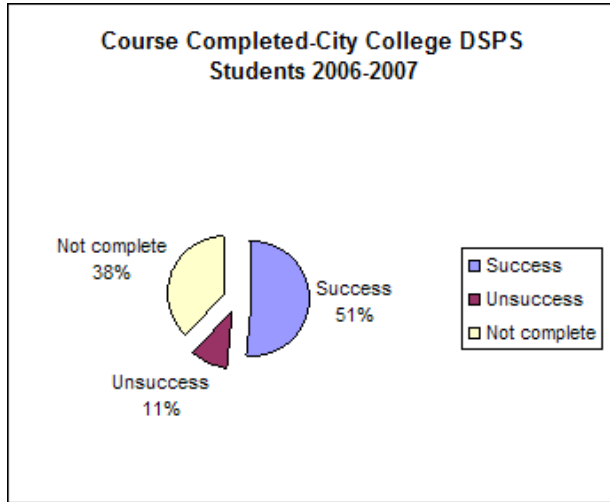


**Course Completed-City College DSPS Students**

**Course Completed-City College Students**

Successful completion - letter grade of A, B, C, or CR  
 Unsuccessful completion -letter grade of D, F, or NC  
 Did not complete -DR, NA, W, I

Success	2426
Unsuccess	504
Not complete	1820



Success	50804
Unsuccess	12283
Not complete	36626

